

## Procedure to Upgrade Firmware on BWRG1000 and BWRG500 Routers

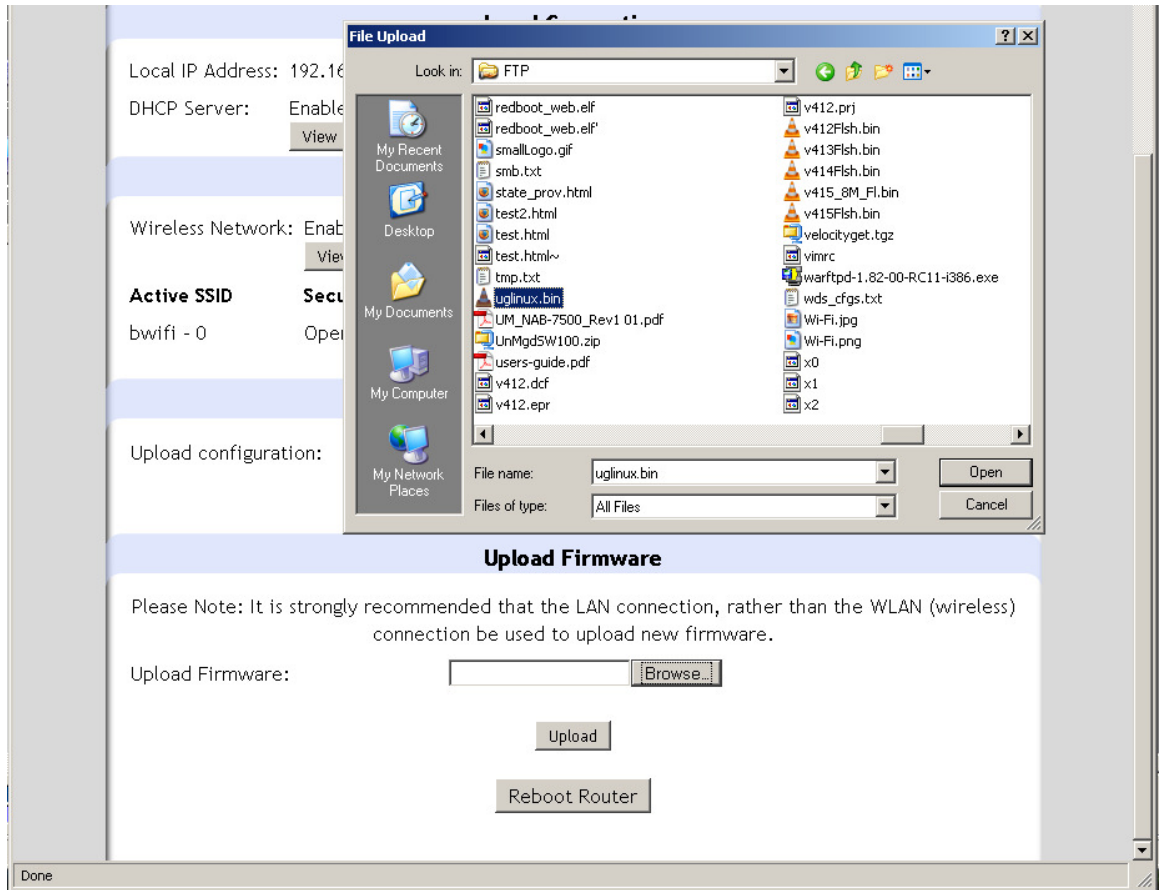
---

1. Download upgrade files (uglinux.bin, RTR\_2010\_05\_27.bin from bountifulwifi.com web site).
2. Make a note of any special settings on the router such as PPPoE user name and passwords (see General web page) SSID name and passphrase. Reset the Router to factory defaults by holding in reset button for ~10 seconds. Connect a PC to a LAN port. Disconnect all other Ethernet cables from the Router.
3. Configure PC with Static IP Address (e.g. 192.168.0.40 Network Mask 255.255.255.0)
4. Open web browser on PC browse to http://192.168.0.1
5. On the Status page scroll down to the Upload Firmware section

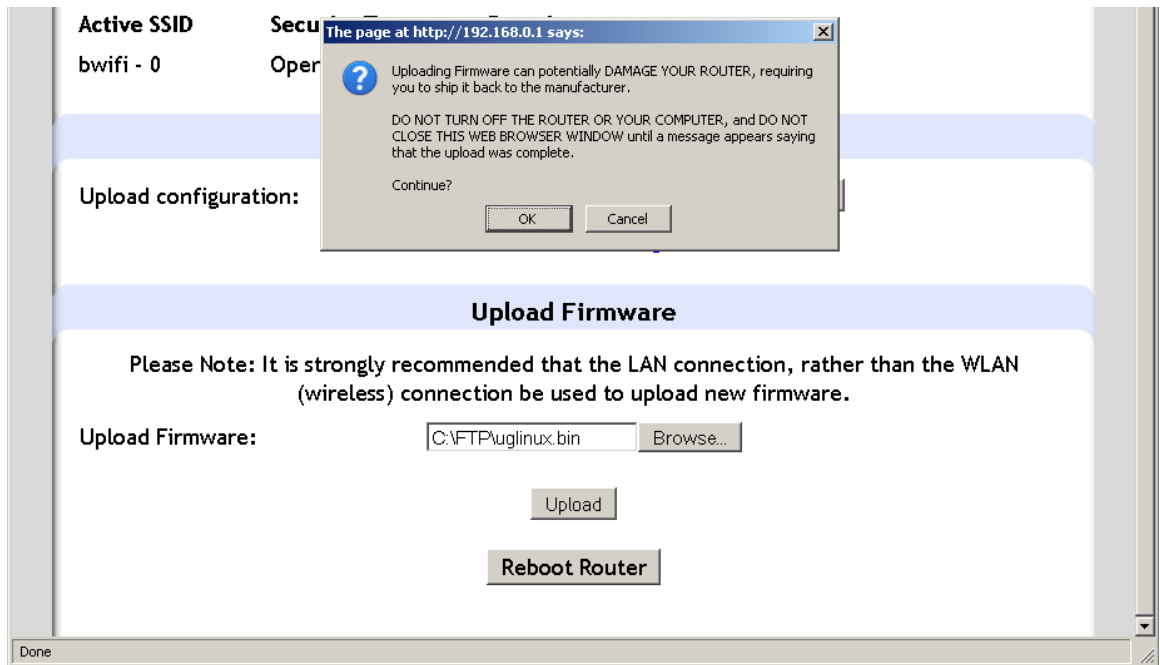
The screenshot displays the router's web configuration page. At the top, there is a 'Configuration' section with an 'Upload configuration:' label, a text input field, a 'Browse...' button, and an 'Upload' button. Below this is a blue link for 'Download current configuration'. The main section is titled 'Upload Firmware' and contains a 'Please Note' message: 'It is strongly recommended that the LAN connection, rather than the WLAN (wireless) connection be used to upload new firmware.' Below the note is an 'Upload Firmware:' label, a text input field, and a 'Browse...' button. At the bottom of this section are two buttons: 'Upload' and 'Reboot Router'. The status bar at the very bottom of the browser window shows the word 'Done'.

step 5 continued...

click the Browse... button and find the uglinux.bin file that was downloaded in step 1. Then click Open.



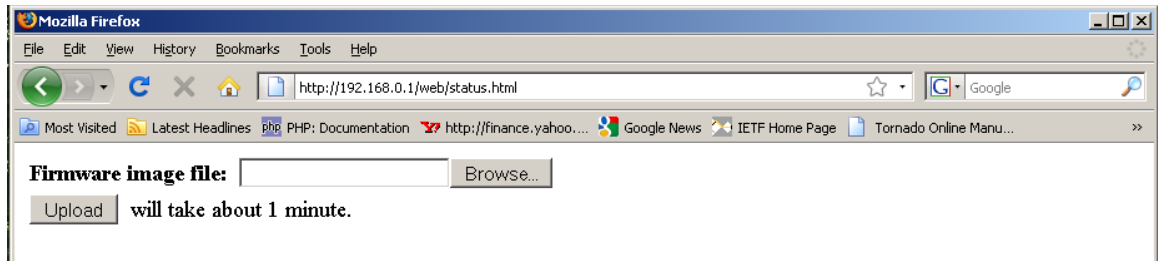
Step 5 Continued... Then click Upload. A popup window will appear click Ok.



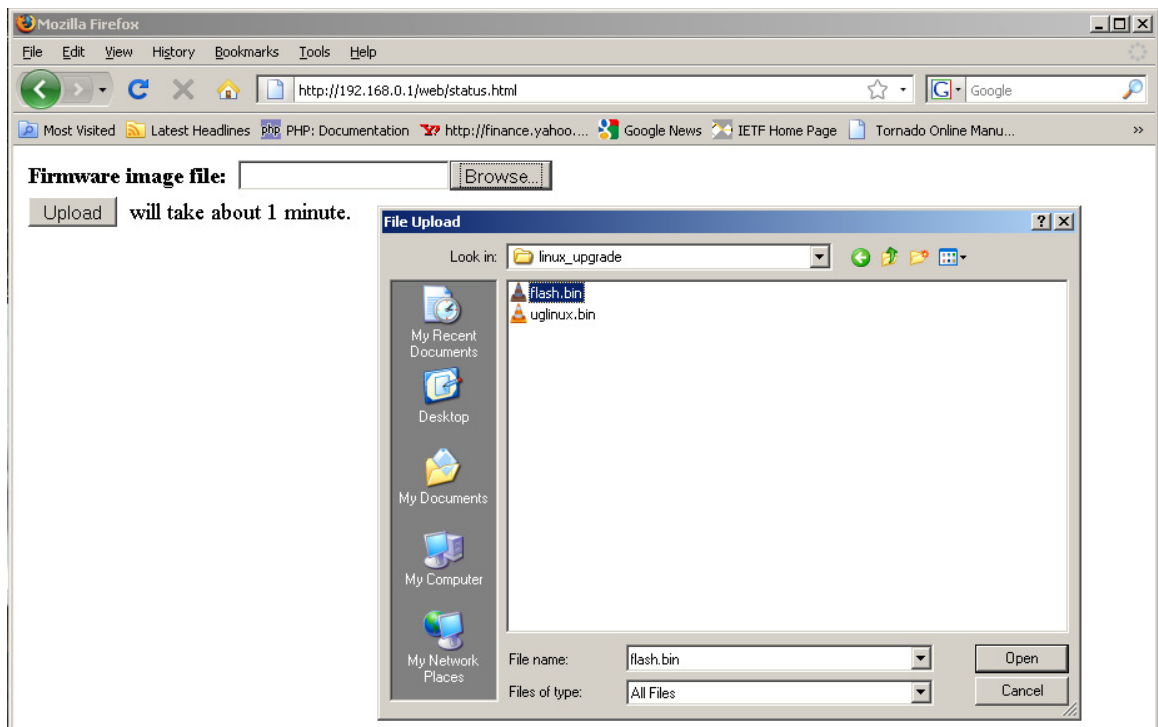
6. When prompted click Reboot button to reboot the router.



7. A new upload page will be loaded in the web browser (<http://192.168.0.1/index.html>)

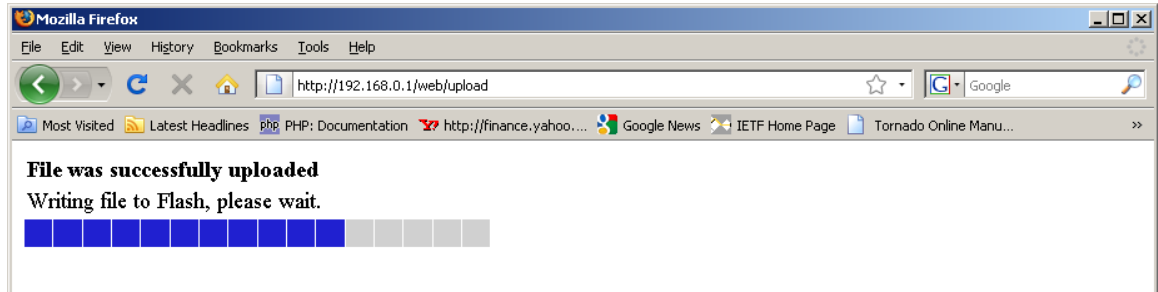


8. Click the Browse... button and locate the Firmware image file RTR\_2010\_05\_27.bin on the PC that was downloaded during step 1.

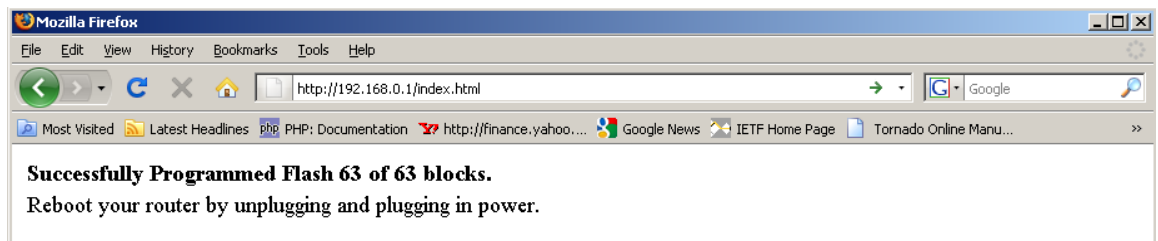


9. Click Upload ... wait for about 1 minute for the file to be uploaded.

- Once the file has uploaded a status page indicating the File was successfully uploaded should appear and a status bar will show progress of the Flash programming. The Flash programming will take approximately 8 minutes. If there is an error during steps 10-12 do not power off the router go back to step 7 and try again.



- Once complete a Success page should load telling you to reboot your router by unplugging the power and plugging it back in.



- Watch for the System Status light to come on. Then you can browse to <http://192.168.0.1> where you should see a new web interface for the router. If you see the upload page then perform steps 7-12 again (you may have to browse to <http://192.168.0.1> again).

